

How To Build A Shadow Box With Shelves



By Fred Schneider

Building a shadow box frame with shelves allows for a more traditional method of displaying objects.

Shadow box frames offer you many options when framing treasured objects. The list of objects that can be placed in a shadow box frame is seemingly endless. Whether you are charged with encasing sculptures, needlework, souvenirs, or awards, consider a shadow box for maximum effect.

Would you like to create a shadow box that makes the most of the space it will fill? Then consider building shelves into the frame design. By doing this, you'll incorporate more elements into the shadowbox and it will be an unusual showpiece.

Customers enjoy shadow boxes because these frames

protect precious objects and can even tell a story. In the photo above, you can see that by including shelves to the frame at right, photos of the collector were able to be incorporated into the design and two vases were displayed in a quite a small space.

In the instructions that follow, you will see how a combination of cap frame and extender mouldings was made into this miniature china cabinet.

The diagrams and corresponding photos on pages 36 and 37 demonstrate how to add a shelf to a shadow box. You can use this technique to expand the designs that you offer.

Adding Shelves

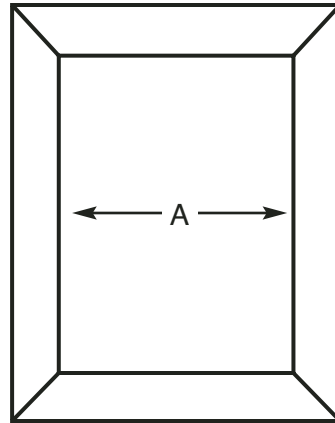


Diagram A: Measure the inside width of the shadow box. The shelf will be exactly that length on its outside measurement.

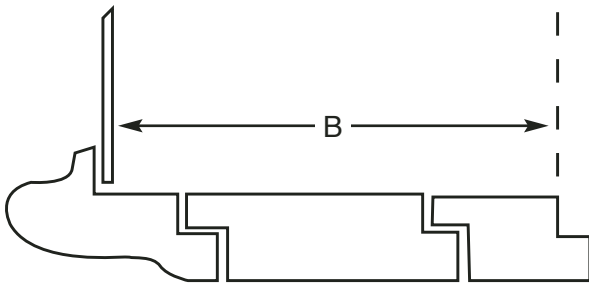


Diagram B: To determine the depth of the shelf, measure from the glass to the backing board. You won't want the shelf to touch the glass, so deduct $\frac{1}{4}$ " to $\frac{1}{2}$ " from your measurement.

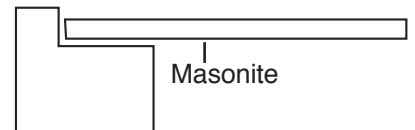
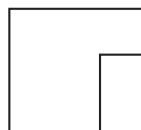


Diagram C: Use a matching or complementary moulding for the shelf. When cutting and joining, simply rotate the moulding onto its back. This will give you a natural ledge in which to lay the masonite.

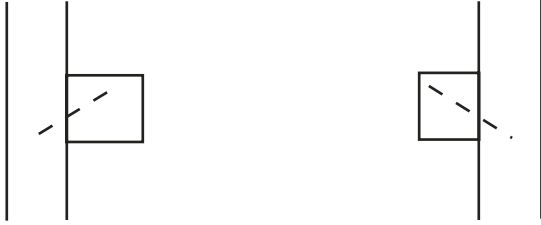


Diagram D: Cut a piece of 1/8" masonite to fit in the shelf frame.

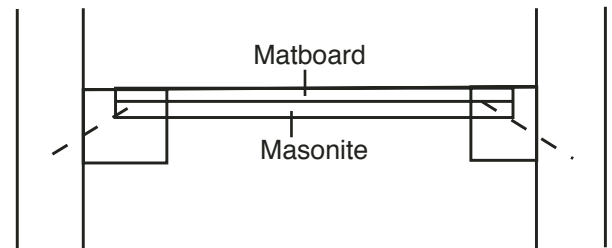


Diagram E: Staple the masonite into the moulding edge and toenail the shelf in the frame. We recommend two staples on each side to ensure no shelf movement.

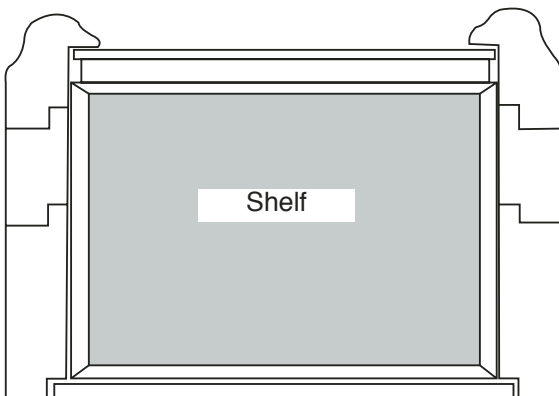


Diagram F: Cut a matboard to serve as the final covering for the shelf. The matboard will cover the nails and give the shelf a clean finish.

Fred Schneider, the Boxer[®] Doctor at FrameMica, used a FrameMica Boxer[®] frame to build his shadow box with shelves. He has over 30 years of experience in picture framing.