

Deco Corner Mats In a Combination of

by Valerie McClure, CPF

The Project To mat and frame Pears in Canton Bowl, a print by Peter Haas that is a still life study of golden pears in a bowl from the Canton area of China. The Oriental feel of the print lent itself to using a combination of silk and suede matting. The metal frame of cobalt blue blends admirably with both art and mats.

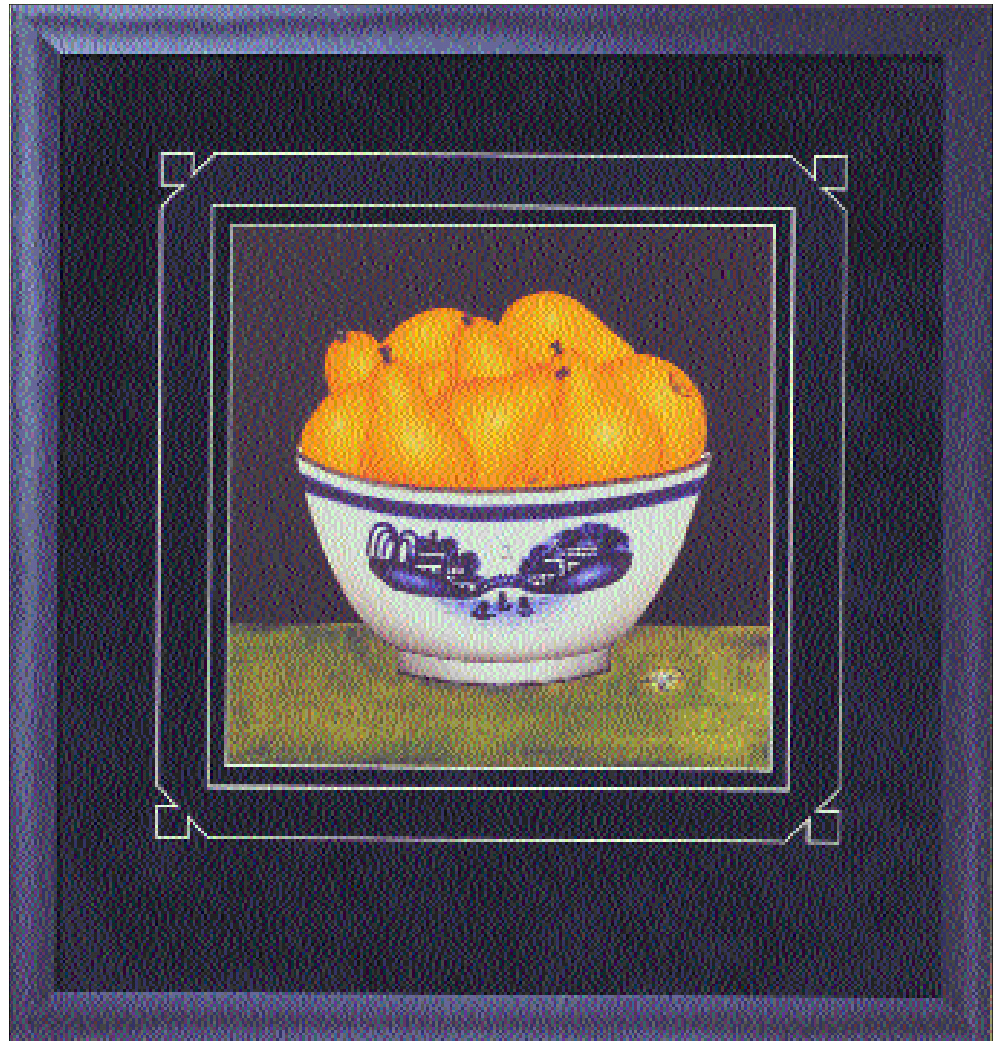
The Instructions

The exterior dimension measures 16 H" x 17 H" (35 unites inches) with an inside opening of 9 I" x 9 I". The matting overlaps the image by $\frac{1}{8}$ " eliminating the white border and keeping the focus on the artwork and the white bevels of the matboard.

The bottom mat of dark blue suede matboard measures 3 $\frac{3}{4}$ " sides and top and is weighted at the bottom 1" to measure 4 $\frac{3}{4}$ ". This mat was cut and set to one side. A piece of blue silk matboard was then squared and sized to the same outside dimension. This was then marked out on the back as for a Deco Corner Mat.

Set mat guide at 3" and mark top and sides of mat. Move guide to 4" and mark bottom of mat. (This will be the opening size, which may be cut now or at a later time.)

Now a 1" overlay was created to set on top of the suede matboard (This particular one was cut from the fallout of the Deco Corner Mat). Normally the fallout would show no



Suede and Silk

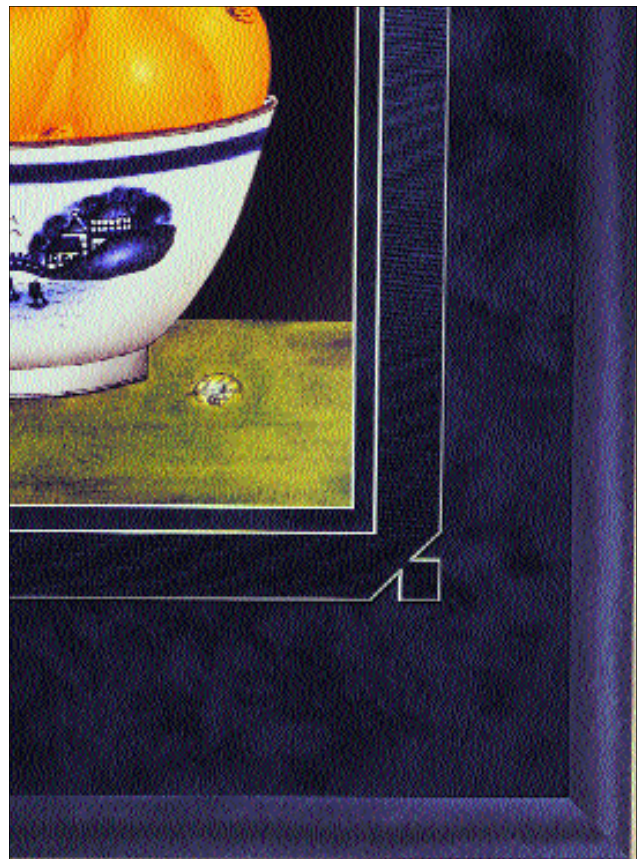
bevels but in this instance we are reversed the cutting procedure. Great care must be taken to ensure the $\frac{5}{8}$ " squares that would ordinarily be discarded from the Deco Corner Mat remain intact.

Set the mat guide at 2", marking mat top and sides. Move guide to 3" and mark bottom of mat. Still at the bottom of mat, move guide to $3\frac{5}{8}$ " and mark once more making sure that lines are long enough to create a definite square. Repeat this step with guide set at $2\frac{5}{8}$ " for top and sides of mat (see layout and measurements in diagram 1). The guide should then be moved to 3" and small lines made top and sides. Then, move the guide to 4" and make the same small lines at the bottom of the mat.

Now, connect the last set of marks made at 3" and 4" (see broken line in diagram 1). It is necessary to remove mat guide completely to successfully execute this particular design. Remember, we want all bevels to show since this is an integral part of the design. It is critical to pay close attention when cutting.

Begin by cutting the slant lines marked in red. Cut blue lines next and finish off by cutting exterior lines marked in green (diagram 2). There should now be a fallout with the white bevel showing on all cuts (diagram 3). It may be necessary to hand trim the little triangles on either side of the squares.

If you did not cut out the opening earlier this should be done now using your pencil marks as a visual aid. Do not put the edge next to the cutting bar for it is quite fragile having already been beveled. This mat is now ready to be affixed to the bottom mat leaving $\frac{3}{8}$ " inner cuff of suede next to art and 2" and 3" respectively between bevel of fallout and frame.

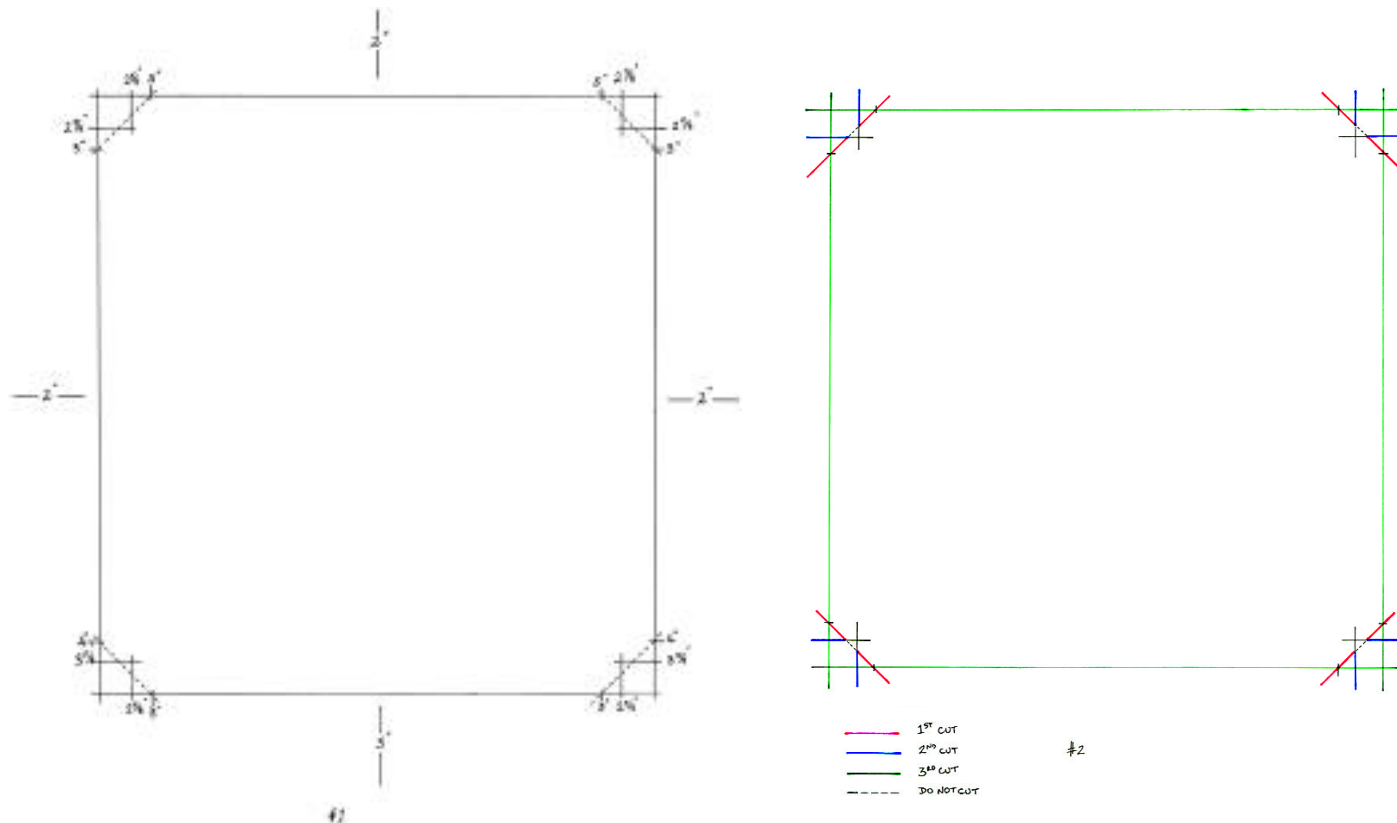


The Pricing.

Frame elements	Cost	Sell
Metal Frame: 6'—3 x chop, \$8.15 pr. ft.	\$16.26	\$48.90
Matting:		
G sheet silk	\$4.90	\$35.00
G sheet suede	\$5.50	\$35.00
Decorative Corners:		\$20.00
Glazing: Regular Glass	\$1.54	\$7.25
Hinging:		
Archival Foamboard	\$1.17	\$13.50
Fitting Charge:		\$10.00
Total	\$29.37	\$169.55

**Regular charge for Deco Corner is a suggested price of \$10.00. Due to the slightly added difficulty in cutting this design, the price has been doubled.*

DECO CORNER MATS



#1 Before cutting, carefully mark the back of your mat.

#2 To be certain you will make the cuts in the correct order, it helps to use different colored pencils.

#3 The fallout will be used to create the overlay.

End note: Instructions for the Deco Corner Mat were originally published in The Art of Creative Matting by Sean Hunt, CPF, and Valerie McClure, CPF. The art for this article was framed by Valerie McClure, CPF, owner of Beyond the Image in Charleston, South Carolina, and a consultant for Nielsen & Bainbridge.

